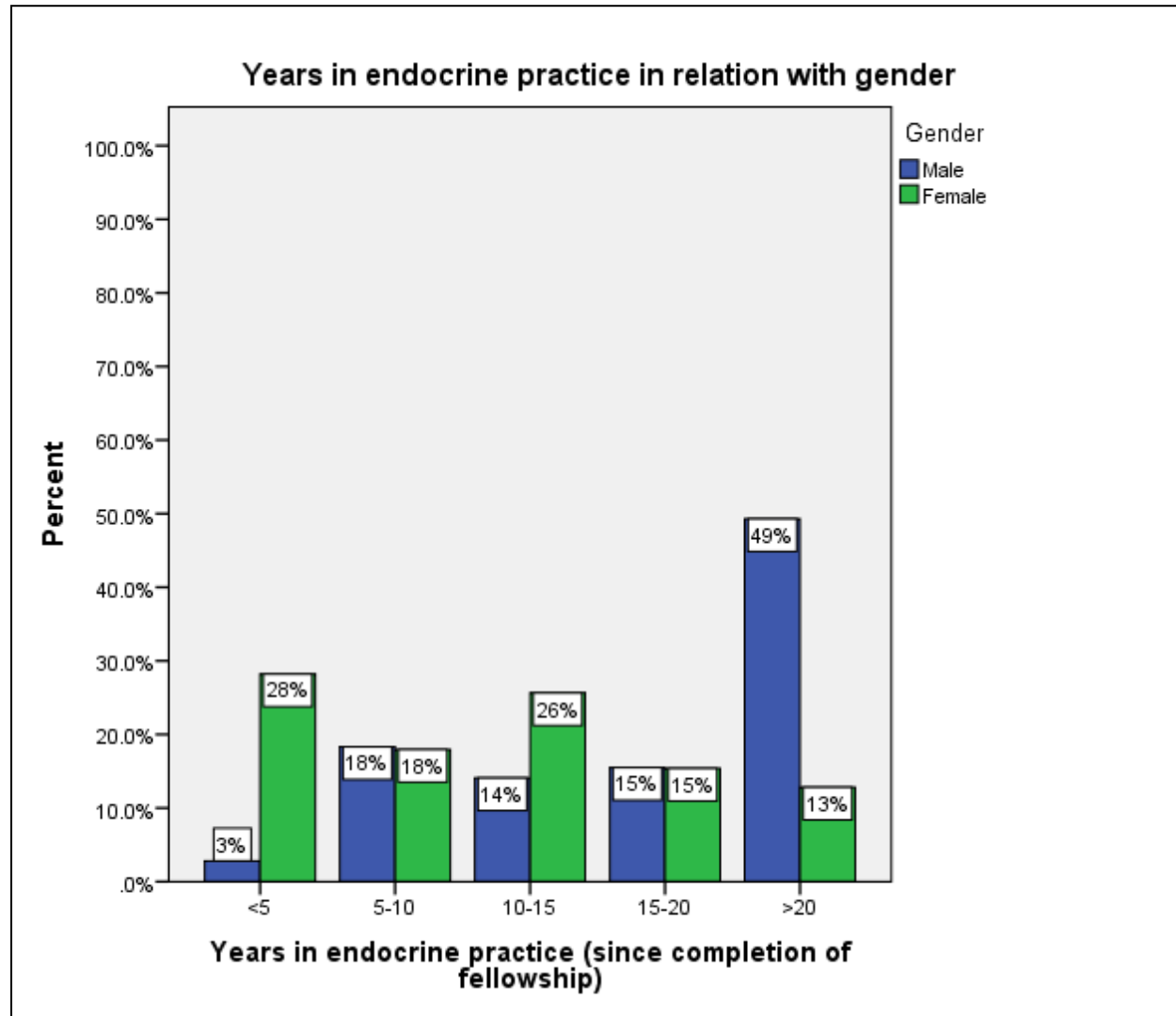


**LSEDL Administrative Survey of Lebanese Endocrinologists Demographics, Practice Patterns and Career Satisfaction, 2016**

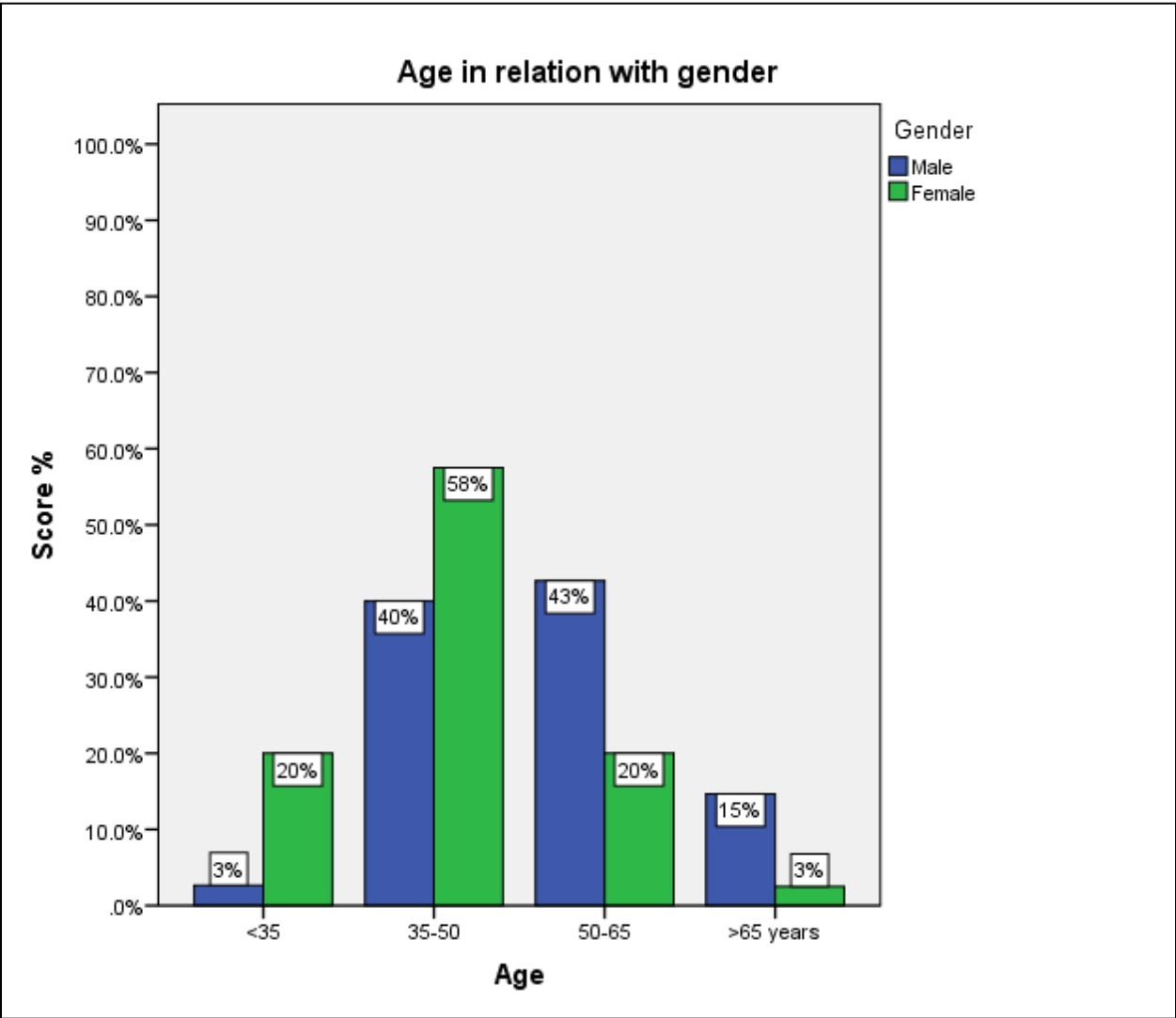
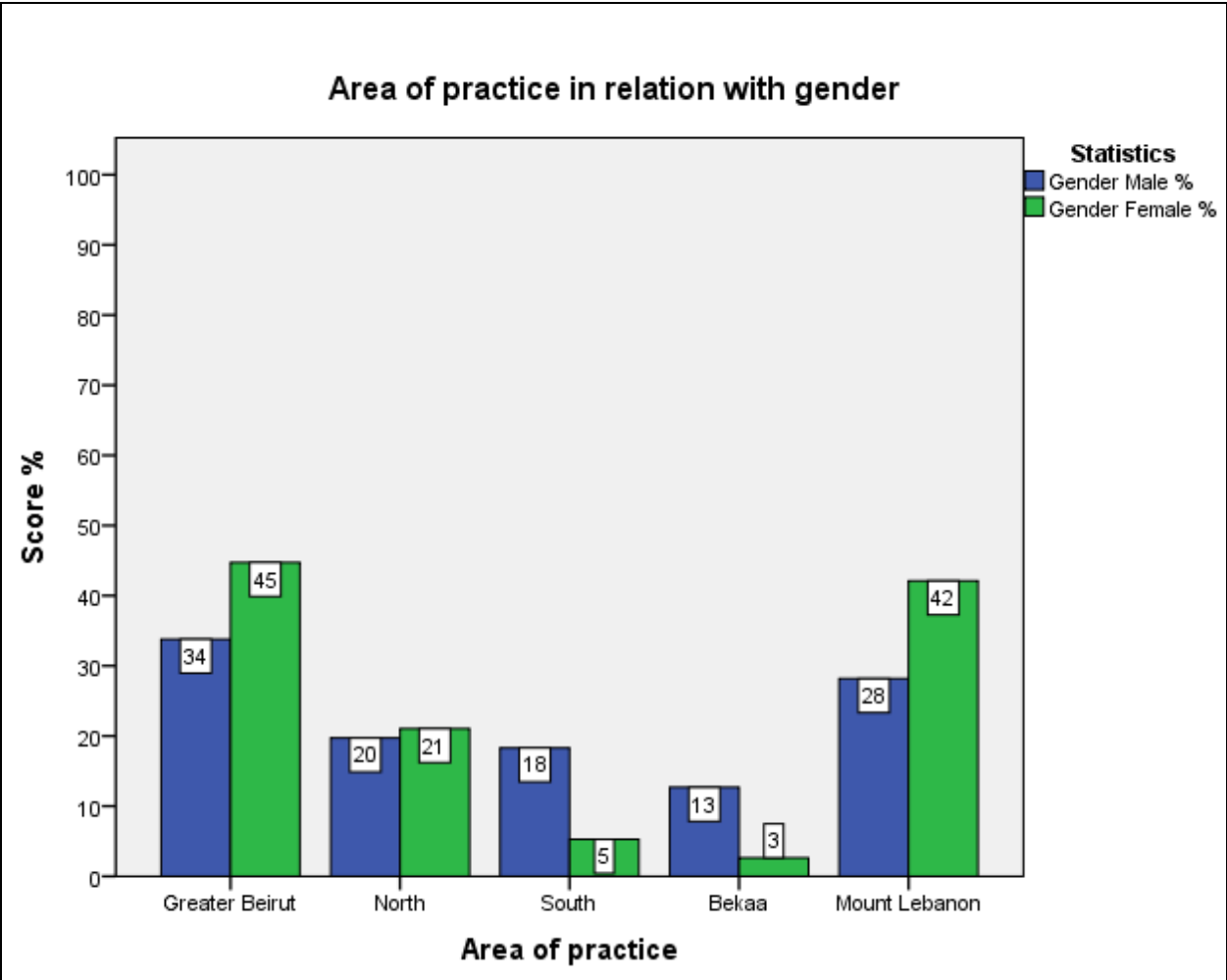
**This two-page survey was initiated by the Lebanese Society of Endocrinology, Diabetes, and Lipids in an effort to better characterize its members.**

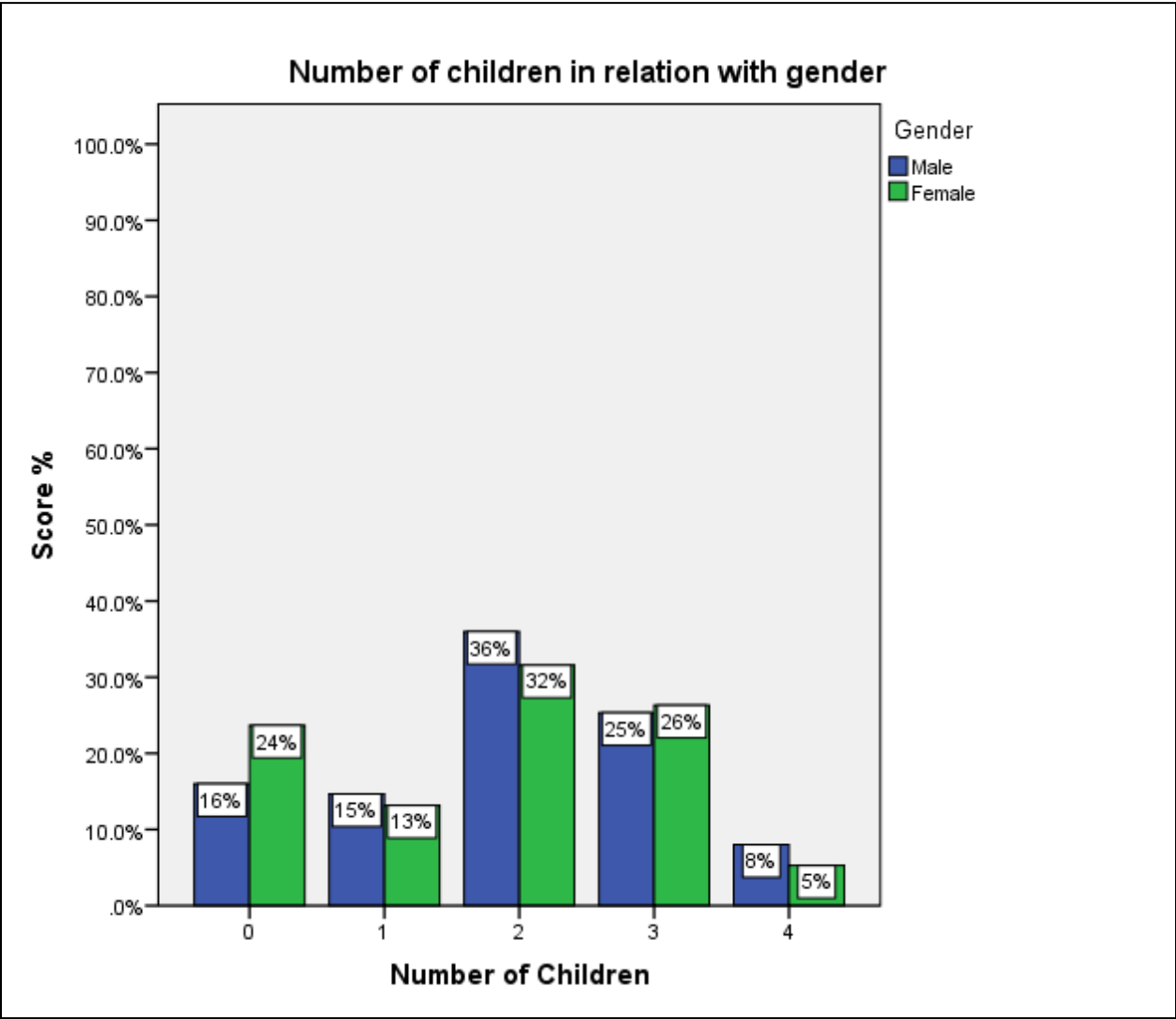


		Area of practice					Total	
		Area of practice - Greater Beirut	Area of practice - North	Area of practice - South	Area of practice - Bekaa	Area of practice - Mount Lebanon		
Gender	Male	Count	24	14	13	9	20	71
	% within q2	33.8%	19.7%	18.3%	12.7%	28.2%		
Female	Count	17	8	2	1	16	38	
	% within q2	44.7%	21.1%	5.3%	2.6%	42.1%		
Total	Count	41	22	15	10	36	109	

Percentages and totals are based on respondents.

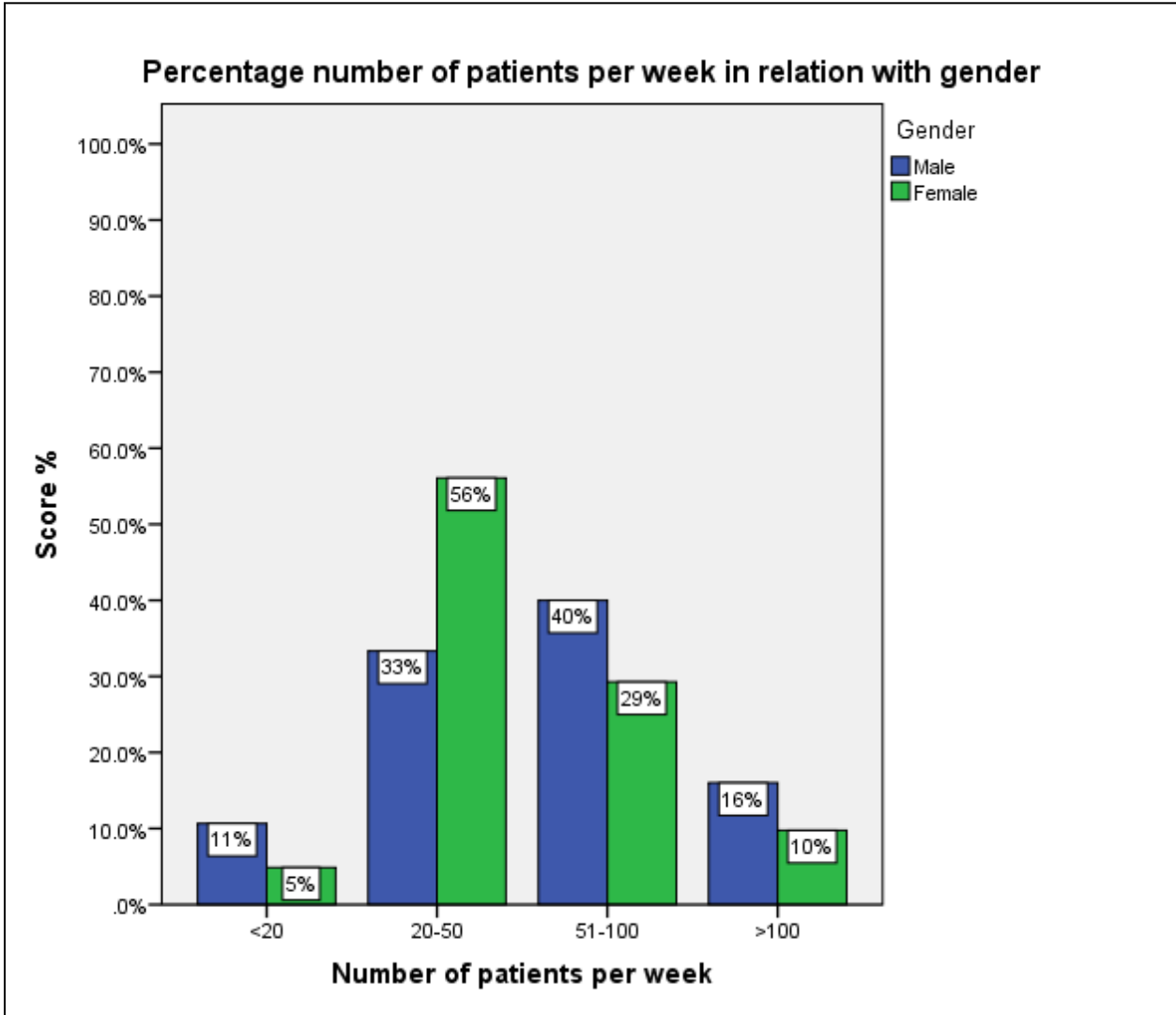
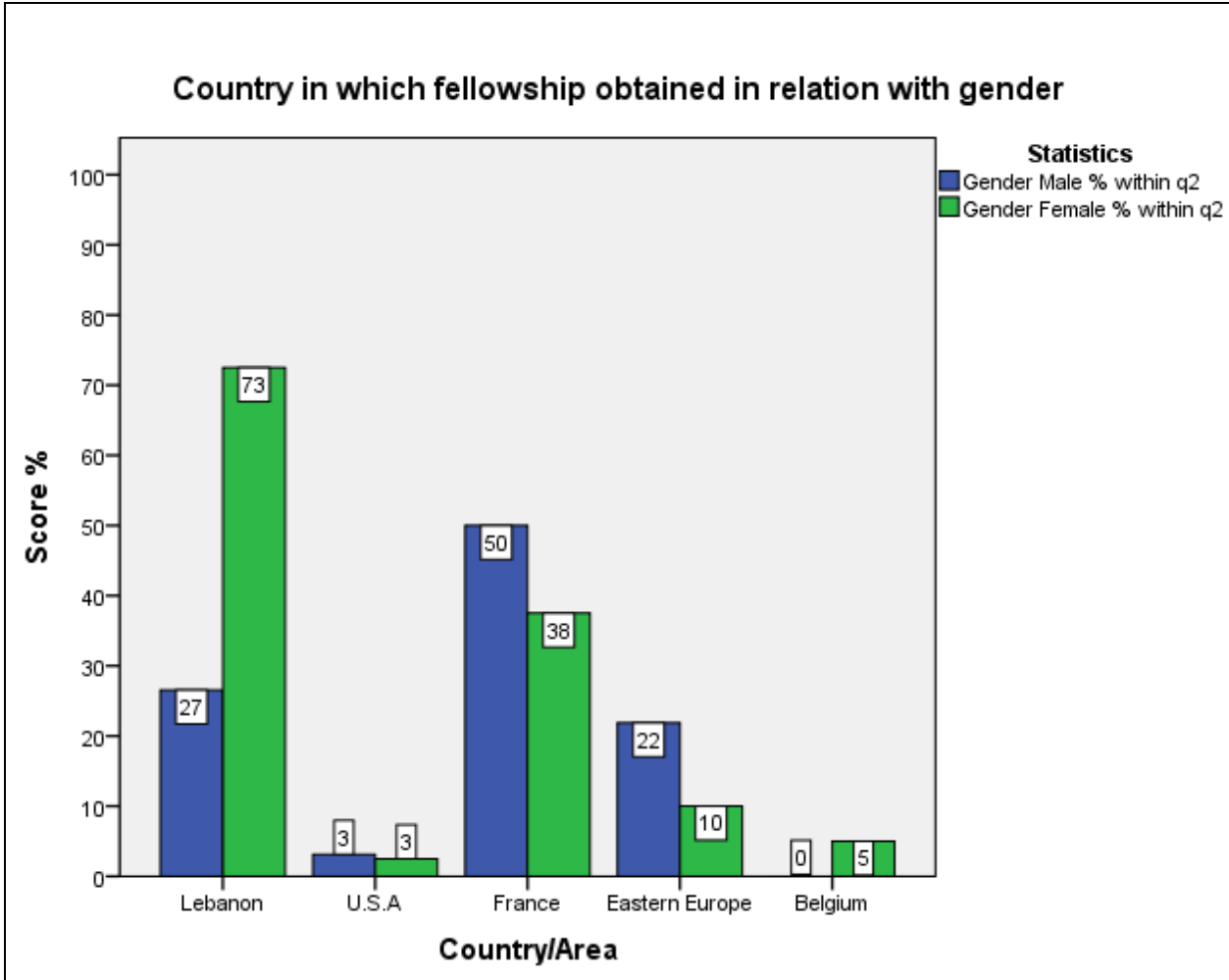
a. Dichotomy group tabulated at value 1.





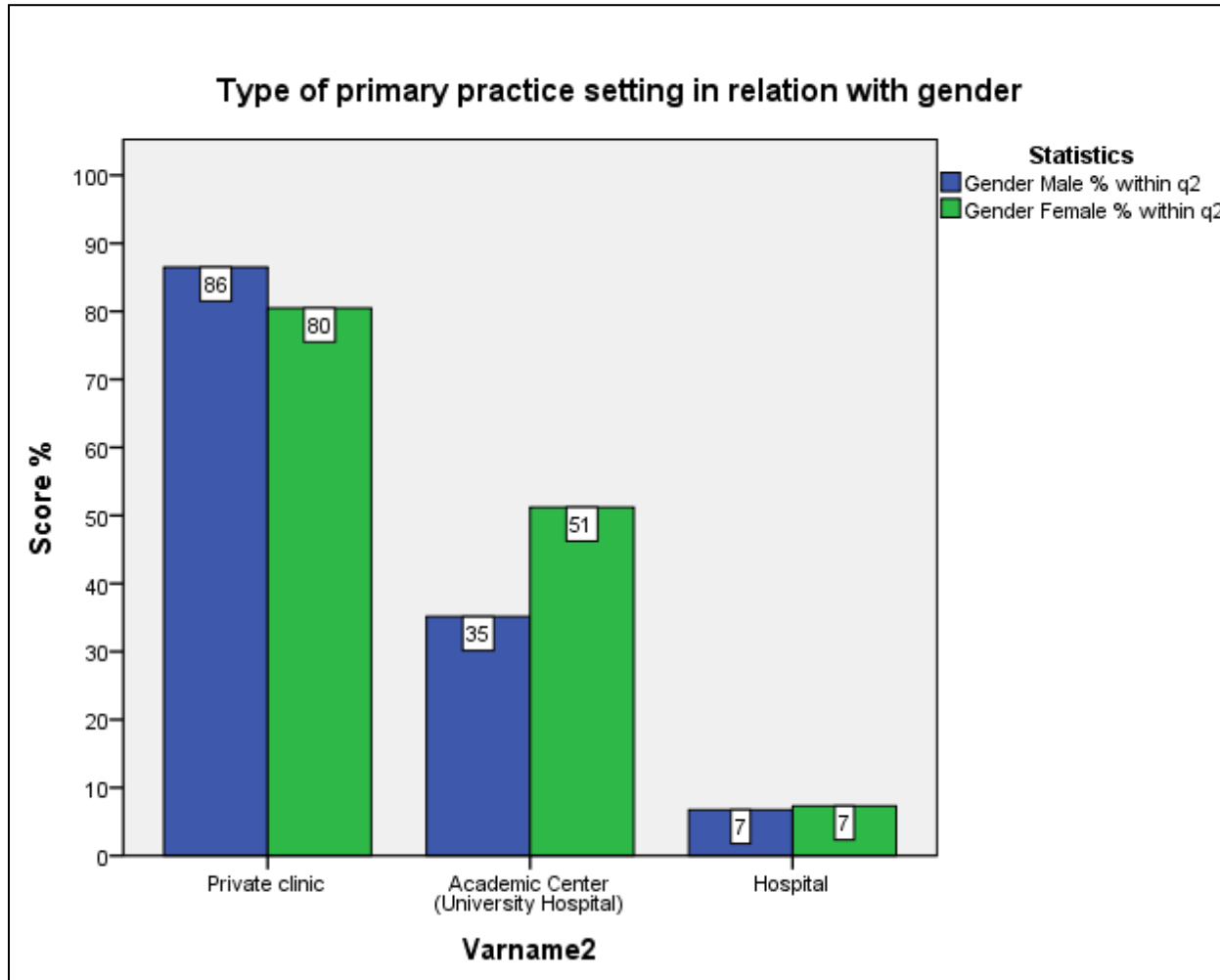
**Country of specialization**

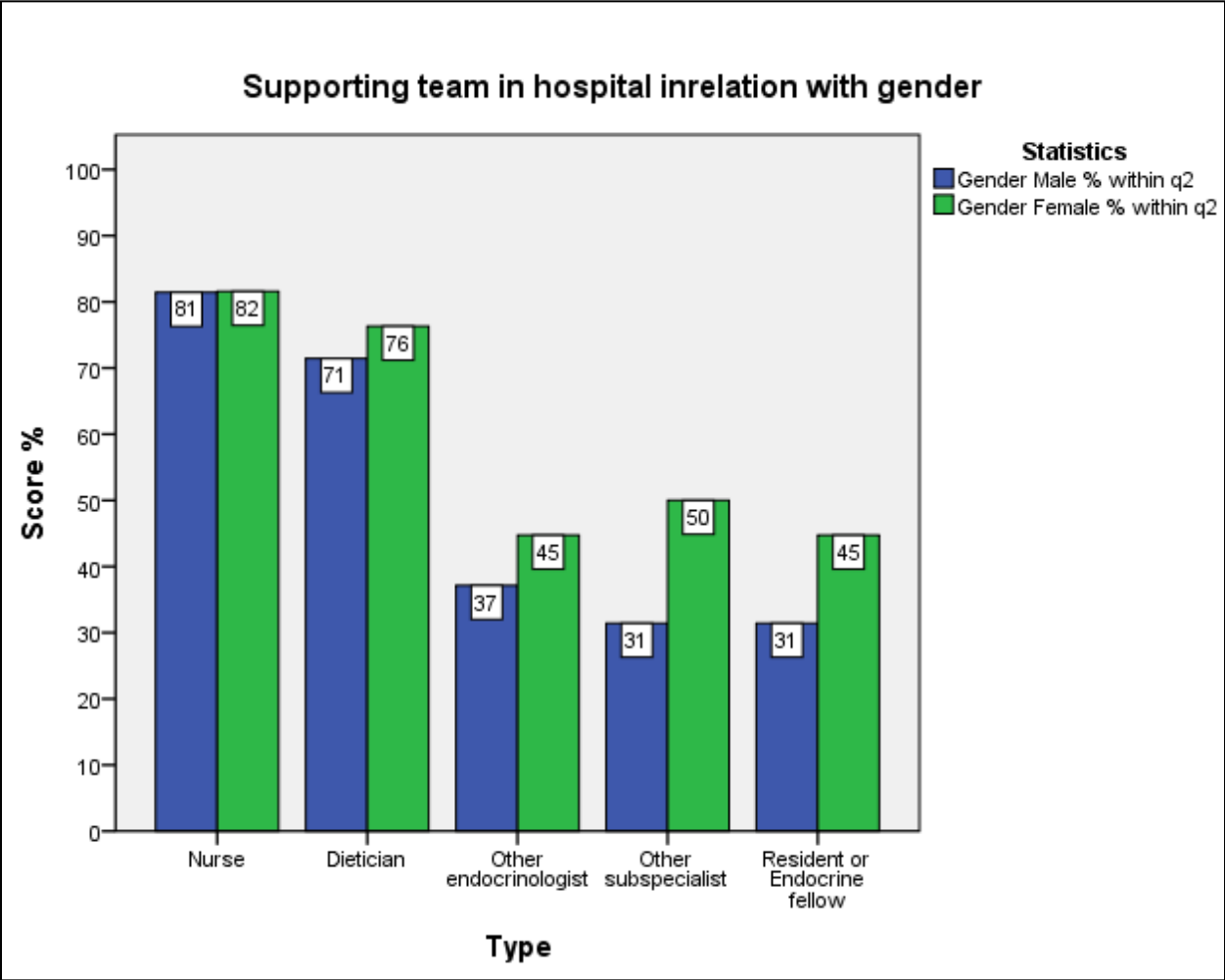
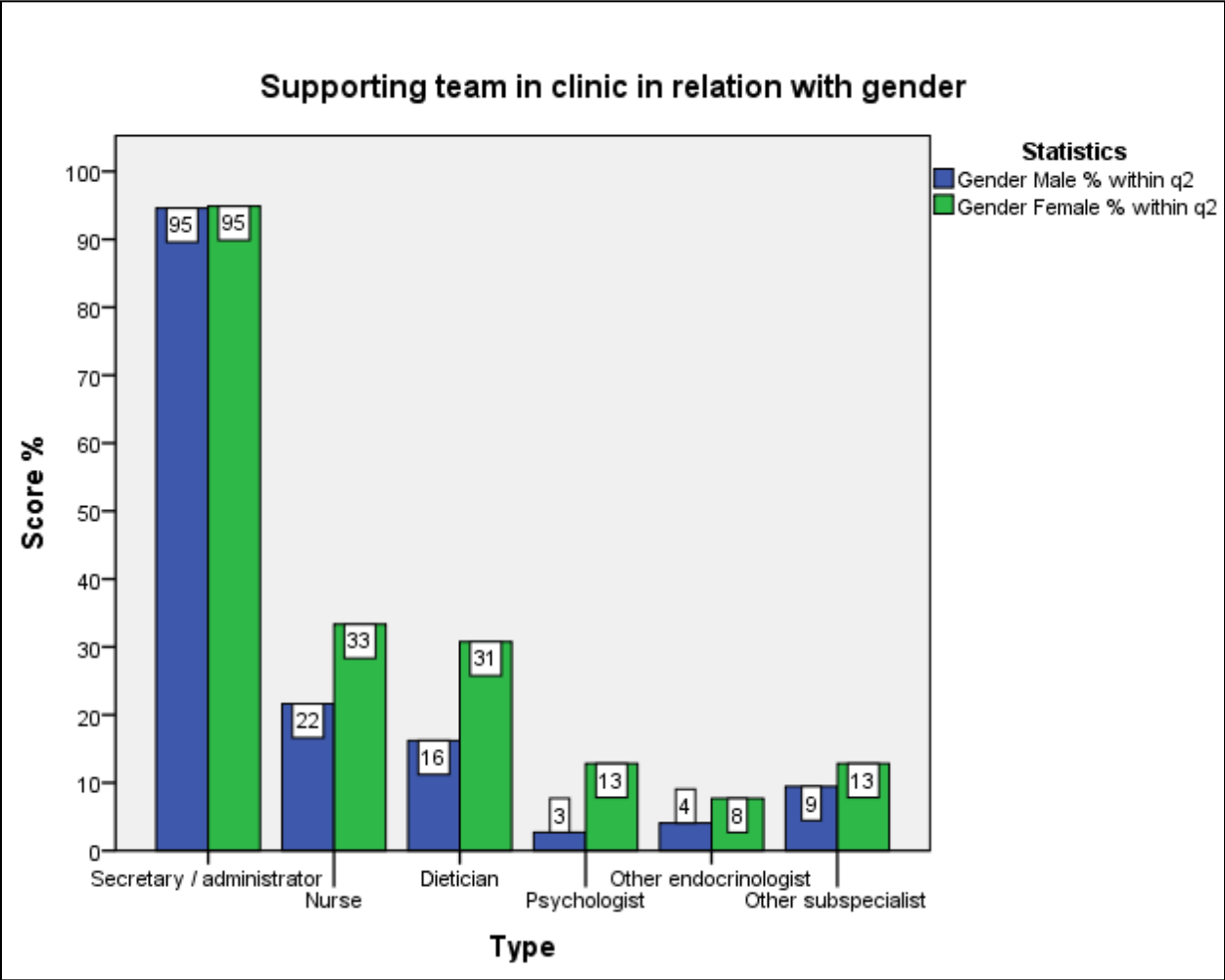
		Country in which fellowship obtained					Total	
		Country/area in which fellowship obtained - Lebanon	Country/area in which fellowship obtained - U.S.A	Country/area in which fellowship obtained - France	Country/area in which fellowship obtained - Eastern Europe	Country/area in which fellowship obtained - Belgium		
Gender	Male	Count	17	2	32	14	0	64
	% within q2		26.6%	3.1%	50.0%	21.9%	0.0%	
Gender	Female	Count	29	1	15	4	2	40
	% within q2		72.5%	2.5%	37.5%	10.0%	5.0%	
Total		Count	46	3	47	18	2	104

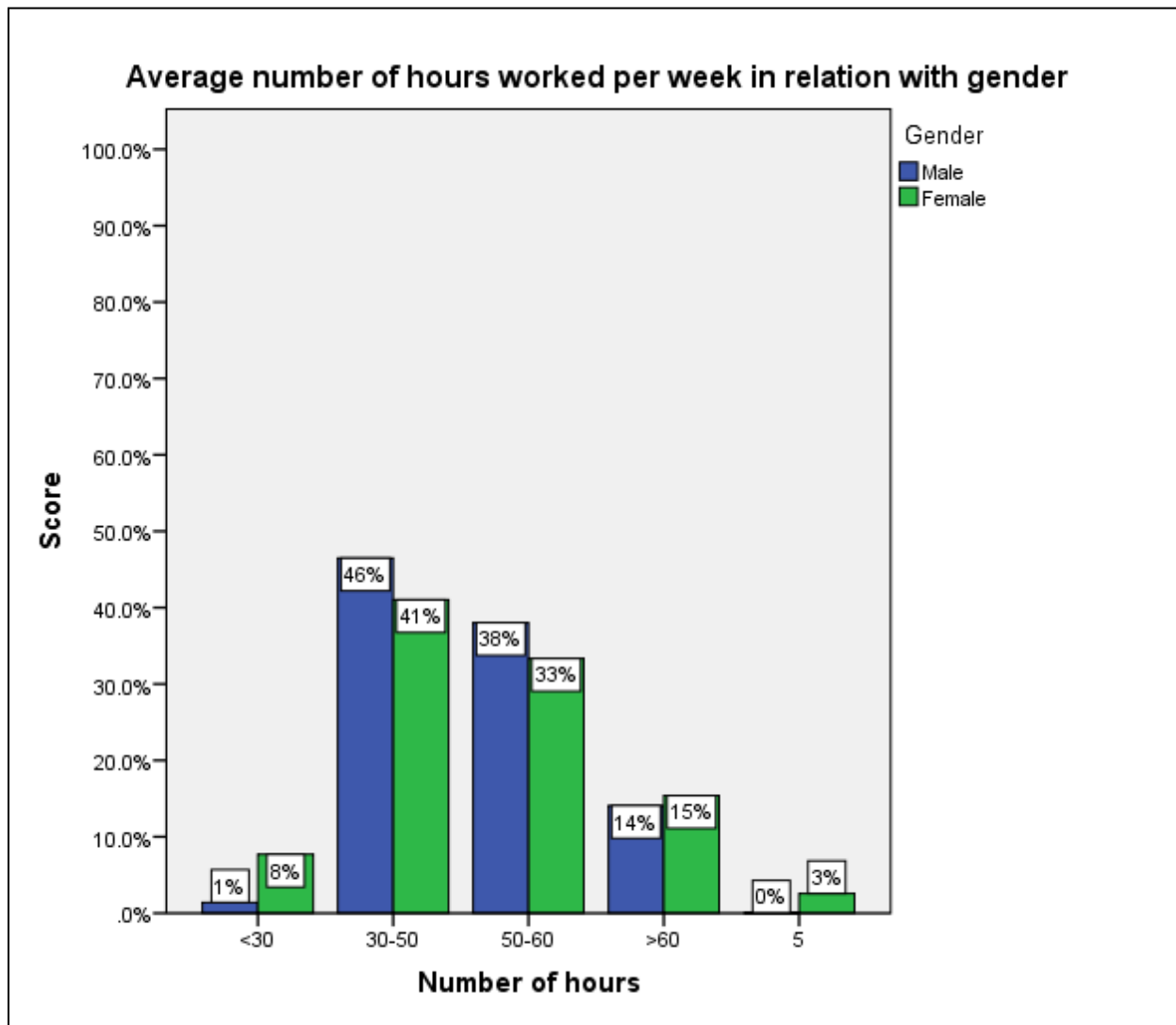


**Type of primary practice**

		Type of primary practice <sup>a</sup>			Total	
		Type of primary practice setting - Private clinic	Type of primary practice setting - Academic Center (University Hospital)	Type of primary practice setting - Hospital		
Gender	Male	Count	64	26	5	74
		% within q2	86.5%	35.1%	6.8%	
	Female	Count	33	21	3	41
		% within q2	80.5%	51.2%	7.3%	
Total		Count	97	47	8	115





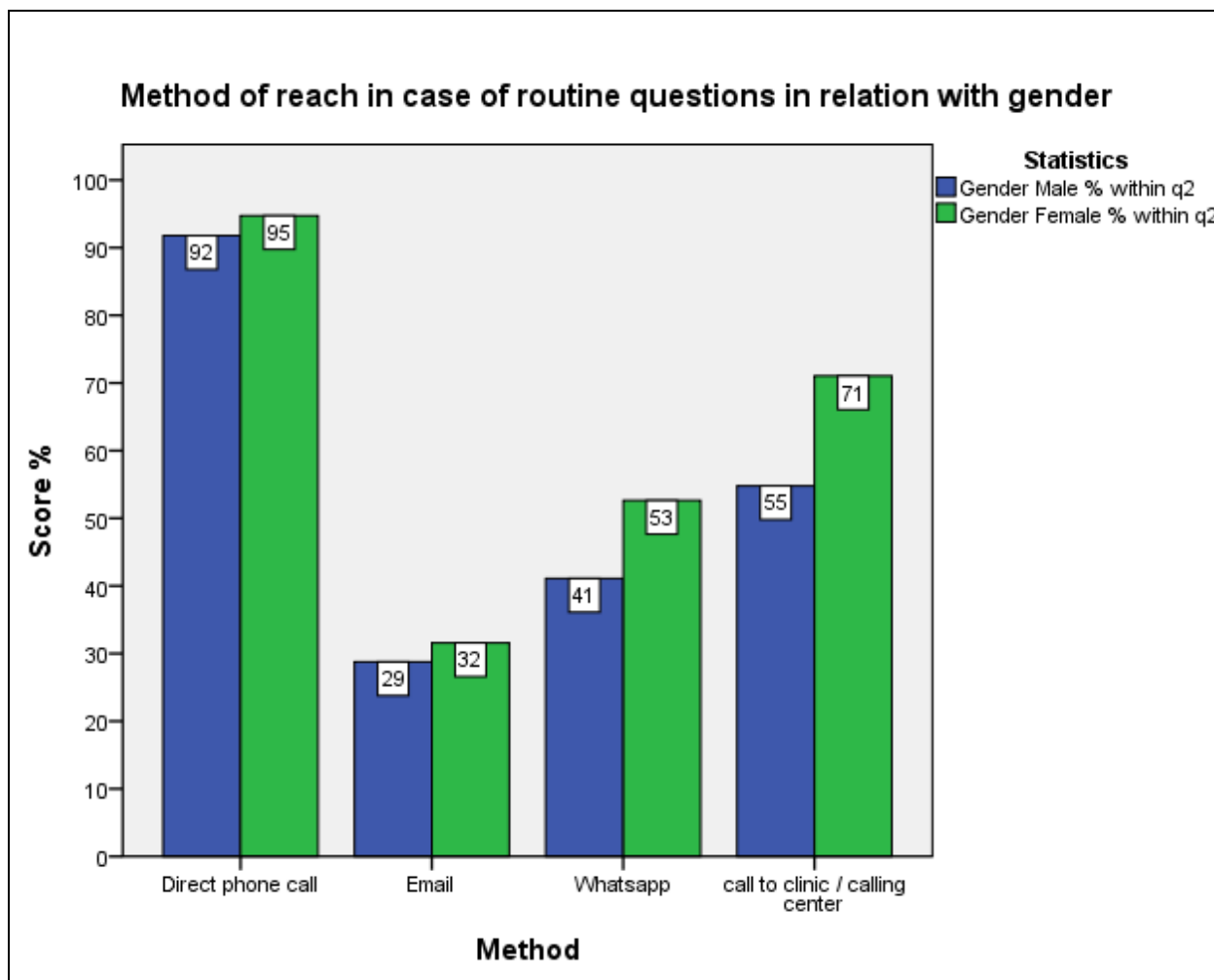


**How do patients contact you in case of routine questions?**

		Method in case of routine question <sup>a</sup>				Total	
		How do patients reach you in case of routine questions - Direct phone call	How do patients reach you in case of routine questions - Email	How do patients reach you in case of routine questions - Whatsapp	How do patients reach you in case of routine questions - call to clinic / calling center		
Gender	Male	Count	67	21	30	40	73
		% within q2	91.8%	28.8%	41.1%	54.8%	
Female	Count	36	12	20	27	38	
		% within q2	94.7%	31.6%	52.6%	71.1%	
Total	Count	103	33	50	67	111	

Percentages and totals are based on respondents.

a. Dichotomy group tabulated at value 1.



#### How do patients contact you in case of emergency?

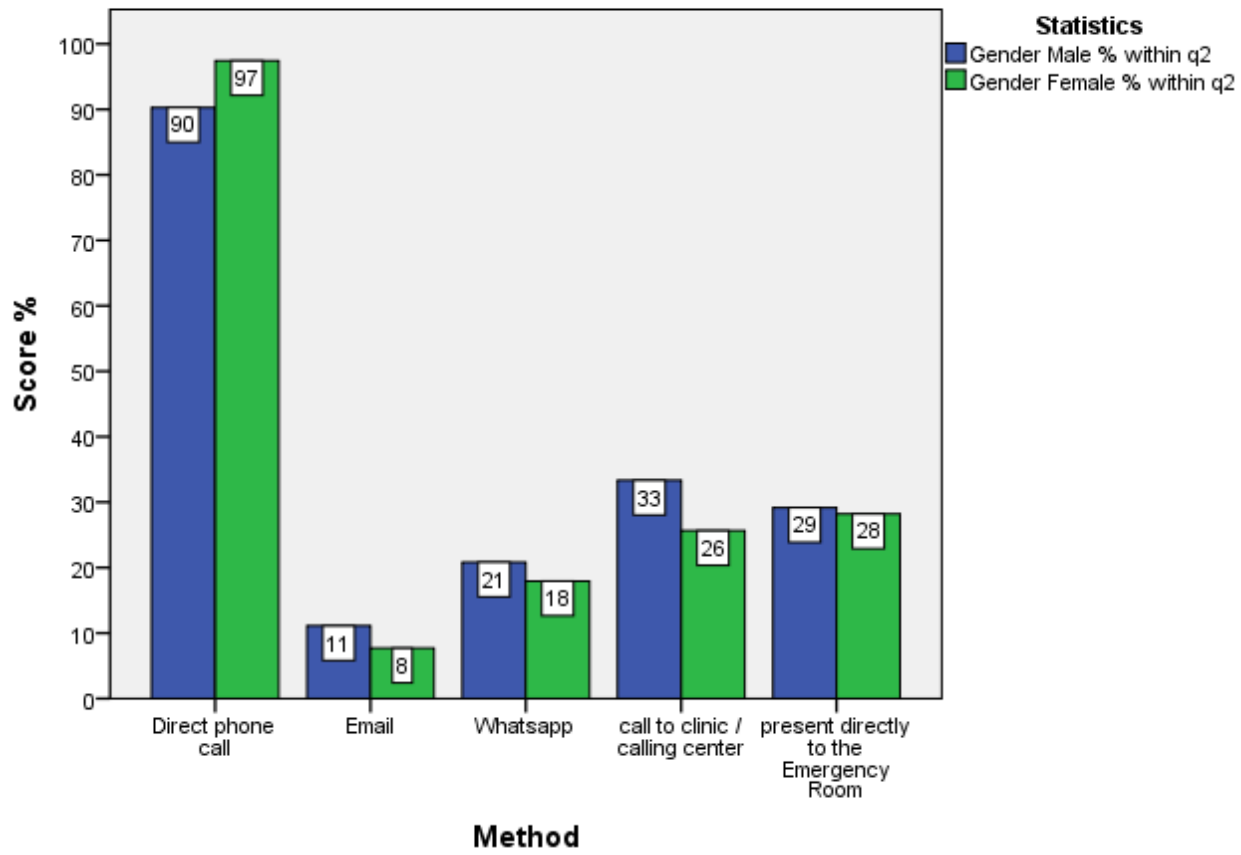
		Reach in case of urgent questions <sup>a</sup>					Total
		How do patients reach you in case of urgent questions - Direct phone call	How do patients reach you in case of urgent questions - Email	How do patients reach you in case of urgent questions - Whatsapp	How do patients reach you in case of urgent questions - call to clinic / calling center	How do patients reach you in case of urgent questions - present directly to the Emergency Room	
Gender	Male	Count 65	Count 8	Count 15	Count 24	Count 21	72
	% within q2	90.3%	11.1%	20.8%	33.3%	29.2%	
Gender	Female	Count 38	Count 3	Count 7	Count 10	Count 11	39
	% within q2	97.4%	7.7%	17.9%	25.6%	28.2%	
Total	Count	103	11	22	34	32	111

Percentages and totals are based on respondents.

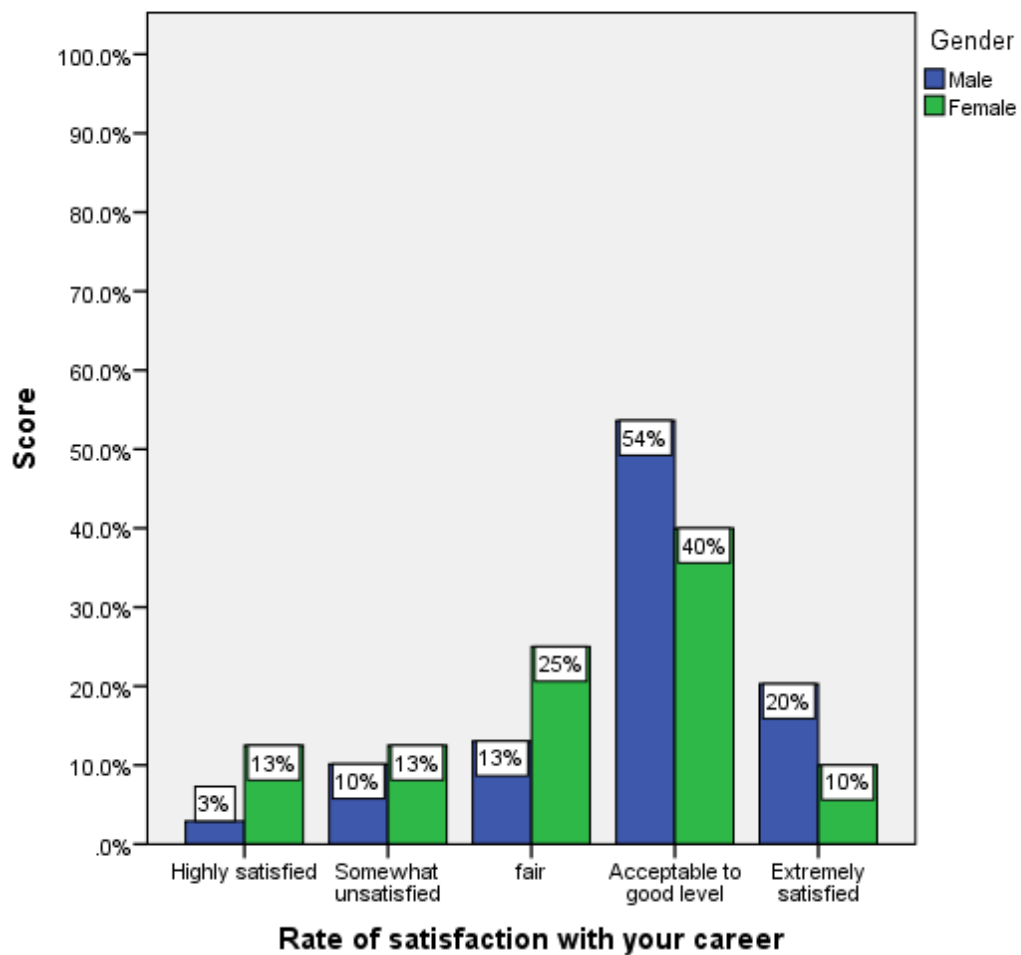
a. Dichotomy group tabulated at value 1.

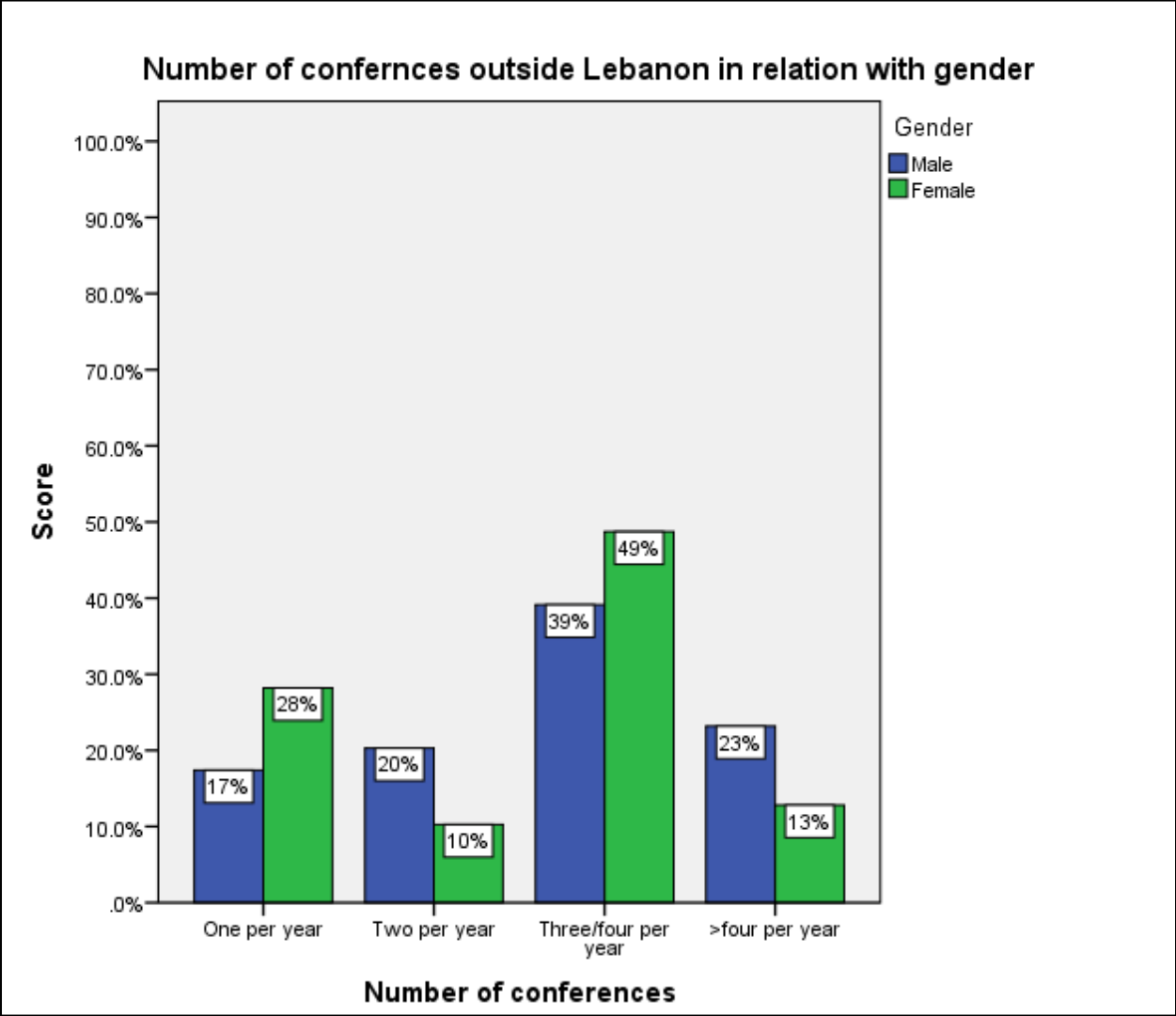


**Method of reach in case of urgent questions in relation with gender**



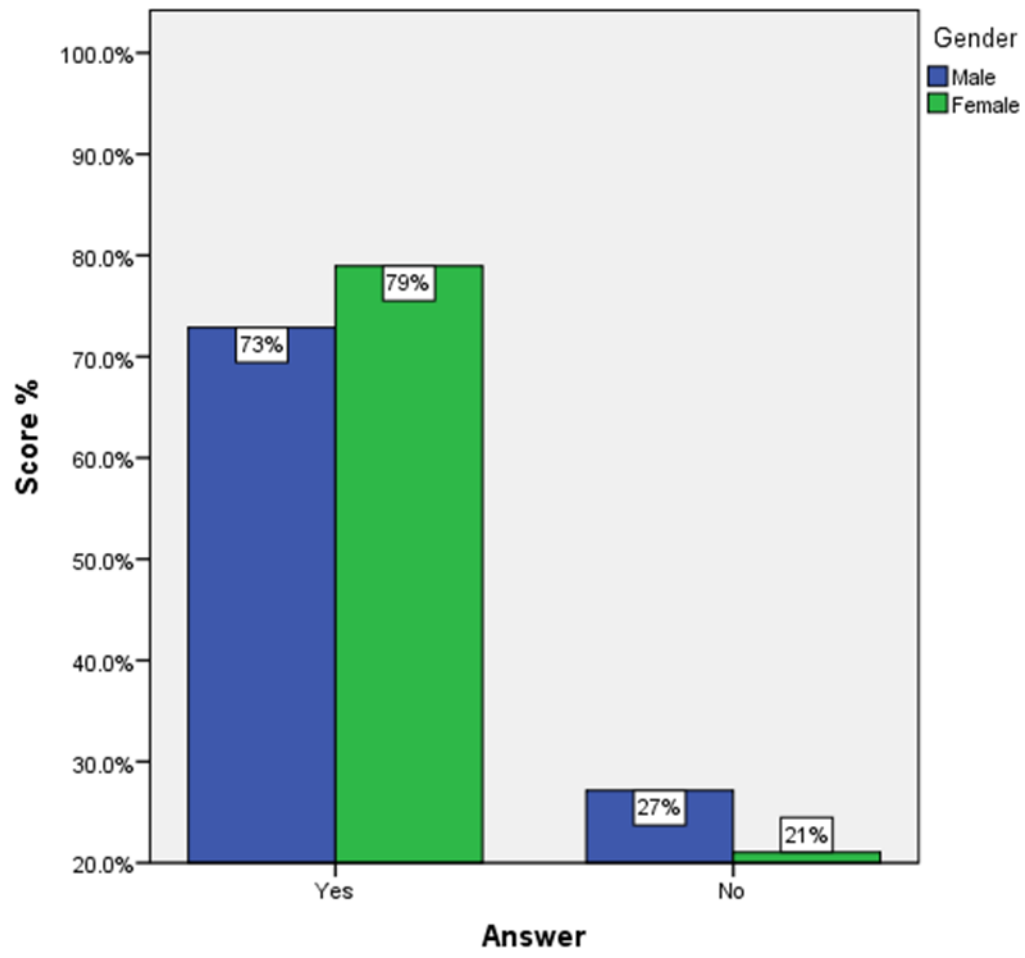
**Rate of satisfaction in relation with gender**





R

Choosing endocrinology as a career in relation with gender



Reasons for 'not choosing endocrinology as a career again':

Open-ended responses were grouped into categories:

Largest category was by far financial in nature (8 out of 9 responses of those who chose to provide an open comment)

Other category was: not rewarding in terms of patient gratitude (1 out of 9)